

On Monday, February 28<sup>th</sup>, I attended the Indiana United Methodist clergy gathering, *Our Life Together*, at St. Luke's UMC in Indianapolis. The theme of the conference was "Dying to Live" and focused on revitalizing congregations.

As I had at last year's conference at the end of April, I went to walk the labyrinth at St. Luke's. An outdoor daylily labyrinth in the neighborhood to the north of the church property is available year round during all daylight hours. Access is from the back parking lot around the rear of Luke's Lodge, down the steps, and across the footbridge.

This time the labyrinth was covered with damp leaves and the daylilies were just barely poking up through the ground in a few places. I could make out most of the paths of mulch and see the places where they bumped into the arms of the cross and have to turn around. I reflected on the fact that the path was visible because it had been walked by others before me. I also reflected on the fact that many of you have told me that you first came to Riverside because someone invited you. Most people who have not grown up in the church come to know Jesus Christ because someone invited them to church. Who walked the path before you? Who will walk the path after you? Who is God calling you to invite to church?

I reflected on the care needed to maintain the labyrinth. Someone has to clear away the dead leaves and branches that have accumulated over the winter. Someone has to pull the weeds that grow among the daylilies. Someone has to water the daylilies when the rains don't come. What will you do to clear the path and show the way for others to come to the heart of God?

I reflected on the green growth pushing its way up through the dead leaves and remembered this passage from Isaiah 43:18-19:

**"Forget the former things;  
do not dwell on the past.  
See, I am doing a new thing!  
Now it springs up; do you not perceive it?  
I am making a way in the wilderness  
and streams in the wasteland.**

Are you ready to join God in the new thing God is doing in and through Riverside?

Shalom in Christ,

John

**Birthdays and Anniversaries**

March...

1<sup>st</sup> Dale Hunter  
7<sup>th</sup> Bill Pittenger  
11<sup>th</sup> Elaine Wallace  
12<sup>th</sup> Darci DeHaven  
19<sup>th</sup> Maurice Carver  
20<sup>th</sup> Judy Turner  
21<sup>st</sup> Barry Turner  
Karen Blank  
Jo Ann Ware  
26<sup>th</sup> Beverly Reese  
29<sup>th</sup> Jo Clevenger  
30<sup>th</sup> Fred Wallace



April...

1<sup>st</sup> Melinda Shocklee  
5<sup>th</sup> Tammy Holt  
6<sup>th</sup> Pat Ashcraft  
7<sup>th</sup> Pat Brown  
Gary Shadoin  
Nicole Affolder  
13<sup>th</sup> Charles Gronendyke  
John Spence  
17<sup>th</sup> Allison Mitchell  
21<sup>st</sup> Kendra Ervin  
29<sup>th</sup> Jeanine Souders  
Susan Reno



March...

11<sup>th</sup> Carl & Aloyse Baney

April...

3<sup>rd</sup> Joe & Debbie Ervin

18<sup>th</sup> Bill & Leona (Floyd) Barber

## March-April Reminder

---

Give thanks with a grateful heart for...

Everyone that helped hand out food and household supplies at the Christian Ministries Food Pantry.

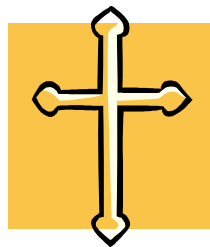
Andy Pittenger and his crew for doing a fine job this winter of keeping snow and ice off the parking lot.

Bill Pittenger, Mark Clevenger, Tom Schamp, and Pastor John for shoveling and chipping snow and ice off sections of the church roof that is flat.

Jim Reese for faithfully keeping the steps and sidewalks around the church clear of snow and ice.

Nancy Campbell and Pat Brown for coordinating the Super Bowl Subs fund raiser for the Kids Hope Serve Day Camp that will be at Riverside this June.

What a wonderful Christmas present the Riverside congregation helped to give the needy of Delaware County by raising \$826.00!!! Thank you for helping...The Salvation Army



### Boy Scout Fundraiser

The Boy Scout Troop and Crew are selling flower flats, hanging baskets, and vegetables as a way to raise money. They have a wide selection of flats, wave petunias, and color bowls at very competitive prices. Order forms will be available at church beginning this Sunday. Orders must be turned in by the 28th of March. If you have any questions, you may contact Penny Smith at 621-3433.

*Ministry Support*

**Trustees' Corner**

**Above and Beyond Preparing for the Future update:**

We are still working on the Above and Beyond project list, which includes purchasing additional heat pumps and filling the cracks, sealing and restriping the entire parking lot. Thanks to everyone that contributed and continues to fulfill your pledges.

**Upcoming Projects**

No one is looking forward to warmer weather more than the Trustees are. There are a number of outdoor projects that need completed and/or started. Landscaping needs to be completed along the wall that was sealed last year. During the winter we discovered water entering through the south wall in the kitchen beneath the stainless steel sink. As soon as weather allows we will have the exterior of the wall exposed so it can be sealed. A step at the Wheeling entrance has deteriorated and will need to be repaired. We will also be removing the graffiti from the northwest corner of the building.

**COVENANT PARTNERS COMMUNITY DAY**

**Community Day** continues in 2011 on the fourth Thursday of the month. Please bring your bags of supplies by Tuesday, March 22nd for the next event on Thursday, March 24th. **Here is the updated list of items to include: unscented hand soap (1 bar or bottle), laundry detergent (small bottle or box), dish detergent (16 oz), Kleenex (1 box), and toilet paper (4 rolls).** Also, please see Susan Reno or Mary Schumacher if you would be willing to share part of your day on those Thursdays from 10-2 with the people at Covenant Partners. You will be blessed.

**PRAYER WALKING**

Resumes in March, Tuesday mornings at 9:00.

**THERAPY DOG TRAINING**

Will take place at Riverside in 2011, with sessions being beginning in March, June, July, August and October. Please contact Deb Dolak [765-288-2514 or 2sibes@comcast.net] for more information about this wonderful course and ministry possibilities following.

## **WORLD DAY OF PRAYER**

“How Many Loaves Have You?” Come Learn about Chile and her people...Friday, March 4<sup>th</sup> at High Street United Methodist Church, 9:30 Registration, 10:00 Program.

## **RIVERSIDE RIDERS**

The Riverside Riders are looking forward to another season of bike rides. The first ride this year will be on Saturday 7 May. We will meet at the church at 8:00am. Destination is the Mill Creek Restaurant in Gaston. Why don't you plan to join us?

## *Passionate Worship and Radical Hospitality*

### **Fellowship Time**

Coffee and snacks are being served each Sunday morning in the Joseph W. Rankin Library. Volunteers are needed so this ministry can continue. A sign up sheet is available in the library. Just let Amy Clevenger know if you have any questions or need to know how to operate the coffee brewer.

### **New Service**

Barry Turner, Tom Schamp, and Pastor John are researching the possibility of starting a new service later this year. They attended a workshop in Indianapolis recently called Exploring the Longevity Revolution: Ministry with Older Adults. If you have an interest in this area of ministry please let Barry, Tom, and/or Pastor John know.

## March-April Reminder

---



### *Lenten & Easter Services*

<i>March 9<sup>th</sup></i>	<i>7:00pm</i>	<i>Ash Wednesday Service at Riverside</i>
<i>April 17<sup>th</sup></i>	<i>9:45am</i>	<i>Palm Sunday</i>
<i>April 21<sup>st</sup></i>	<i>7:00pm</i>	<i>Holy Thursday Service at Gethsemane</i>
<i>April 22<sup>nd</sup></i>	<i>9:00am-7:00pm</i> <i>7:00pm</i>	<i>The Way of the Cross at Riverside</i> <i>Good Friday Cantata: A Tapestry of</i> <i>Darkness at Riverside</i>
<i>April 23<sup>rd</sup></i>	<i>9:00am-7:00pm</i>	<i>The Way of the Cross at Riverside</i>
<i>April 24<sup>th</sup></i>	<i>9:45am</i>	<i>Easter</i>

### **DELAWARE COUNTY UNITED METHODIST MEN'S LENTEN BREAKFASTS**

The Delaware County United Methodist Men's Lenten Breakfasts will be held consecutive Saturdays from 7:30 to 9:00 a.m. at the following locations:

March 12 <sup>th</sup>	Daleville UMC
March 19 <sup>th</sup>	Yorktown UMC
March 26 <sup>th</sup>	Center Chapel UMC

April 2 <sup>nd</sup>	Riverside UMC
April 9 <sup>th</sup>	High Street UMC
April 12 <sup>th</sup>	Muncie Gethsemane UMC

### **WEDNESDAY LENTEN SERVICES**

Will be held at Gethsemane UMC, each week beginning March 9<sup>th</sup> thru April 13<sup>th</sup>, at noon, with light refreshments following the service.

### **TRIAD of Delaware County**

What/Who is TRIAD? TRIAD's purpose is to enhance the lives of seniors in Delaware County and this is an opportunity to invite your friends and neighbors to Riverside. Representatives from the Sheriff's Office, Healthcare providers for seniors and Legal advisors make up TRIAD. TRIAD promotes law-enforcement agencies and seniors working together toward health, safety, & security.

TRIAD's purpose:

- Reducing the victimization of senior citizens
- Enhancing the delivery of law-enforcement services to seniors
- Addressing legal, health and safety concerns of senior citizens
- Educating the community about services available to enhance lives of senior citizens

Did you ever consider that when you put the red flag up on the mailbox, which signals the mail carrier that you have something to pick up, that it also signals an identity thief that there might be a personal check in the mailbox or some other document with your personal information?

On Tuesday the 8<sup>th</sup> of March at 10:00am Scott Cooper, president of TRIAD, will be at Riverside. Scott will be speaking on subjects all Senior Citizens should be aware of. Everyday we hear about Senior Citizens that have been victims of fraud or identity theft. Do you know that thieves will take the blue recycling bags out of your trash and sort through it looking for old bills, preapproved credit card applications, checking account deposit slips, and other documents with all your personal information? Recycle to protect the environment. Shred documents to protect your identity.

Please mark this date and time on your calendar. Inform your friends and neighbors. You will learn something that you didn't know before.

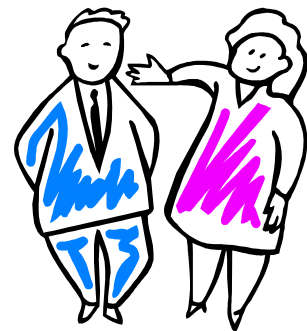
## March-April Reminder

---

### March and April Hosts and Minglers

DATE	OUTSIDE DOOR	INSIDE DOOR	LOBBY MINGLER	SANCTUARY MINGLER
3/06	Dick & Ruth Garringer	Odessa DeHaven	Sandy Jordan	Kay Rankin
3/13	Ron Brown & Terry Jacobs	Sandy Abbott	Susan Reno	Pat Ashcraft
3/20	Bill & Ruthann Watson	Kay Farling	Mary Jane Eiler	Sandy Hunter
3/27	Pat Ashcraft & Wilma Grile	JoAnn Ware	Sara Mitchell	Florence Shelby
4/03	Larry & Nancy Campbell	Sandy Hunter	Sandy Abbott	Margaret Ann DeBoy
4/10	Charles Gronendyke & Bob Harvey	Earlene Harvey	Wilma Carney	Jo Clevenger
4/17	John & Sara McKillip	Henry Dorton	Dorothy Bowman	Wilma Grile
4/24	Mark & Amy Clevenger	Jo Clevenger	Virginia Sharp	Pat Ashcraft

Having Greeters each Sunday is an important ministry at Riverside. If you are unable to serve when scheduled, please ask someone to fill in for you.





## March-April Reminder

---

### 2010 MISSIONS GIVING SUMMARY

\*\*\*\*\*

In 2010 we planned for a little over **\$19,000** in cash donations and goods value (such as canned goods, covenant partner bags), and we brought in approximately **\$21,400!**

**THANK YOU, RIVERSIDE!** We are a very giving church indeed, when mission needs are presented!

I would say that virtually every person has contributed to one of our mission goals in some manner, so thank you so much!

Specifically, here are the goals that we set and the year-end figures:

	<u>Goal in item numbers</u>	<u>Goal (\$ or approx. \$ equiv)</u>	<u>Income</u>	<u>Outgoing Cash or products</u>	<u>Designated for</u>
<b>KEY MISSIONS</b>					
Christian Ministries	200/mo. @ \$1 per item	\$2,400	\$1,610	1610 cans	Food donations/Help food pantry
Covenant Partners	90/mo. @ \$5 per bag	\$5,400	\$5,033	1001 bags and 5 cases water	Monthly sacks
Habitat for Humanity	n/a	\$50	\$0	15 workers	Lunches, Builds
Operation Classroom (see below too)	25 students @ \$75 per	\$1,875	\$148	Cash for scholarships: \$148	Sponsor 25 students
<b>SPECIAL MISSIONS OFFERING COLLECTIONS</b>					
Bishop's Christmas Eve Offering		\$500	\$544	\$544	Children: 1/3 IN, 1/3 US, 1/3 world
Lenten Offering		\$500	\$437	\$437	1/2 Christian Min. - 1/2 Cov. Partners
Loose Change		\$200	\$316	\$316	1/2 to CM, 1/2 to CP
Missionary Support (Vances)		\$900	\$900	\$900	Budget item - for Vances

## March-April Reminder

UMCOR Advanced Specials Offering		\$0	\$0	\$0	1/3 to intl, 1/3 to natl, 1/3 state
UMCOR - One Hour of Sharing		\$50	\$0	\$0	UMCOR for Administrative costs
UMCOR - Haiti Donations		\$0	\$1,071	\$1,071	To UMCOR for Haiti
Haiti Health Kits	\$5 cost per bag	\$0	\$250	\$250	To Haiti
UMCOR Spring Storm Collection		\$0	\$41	\$41	To Tennessee
<b>SPECIAL MISSION EVENTS OR DONATIONS OF GOODS</b>					
Christian Ministries/Crop Walk		\$1,300	\$704	\$704	Christian Ministries
Sleep Room ( Christian Ministries )		\$980	\$980	Meals for one week	Sleep Room (14 people 2X day for one week)
Covenant Partners Dinners				\$300	Covenant Partners
Soup Lunch for Operation Classroom		\$100	\$243	\$243 good will offering	For Operation Classroom
Fundraiser	25 students @ \$75 per	\$500	\$3,966	\$3,966	Operation Classroom Scholarships
Heifer Program		\$2,000	\$1,979	\$1,979	Heifer-INTL.
Muncie Mission/Walk A Mile		\$1,000	\$1,460	\$1,460	Muncie Mission
Teens for Jeans (through Commonway)	15		\$150	\$150	Homeless teens
Operation Classroom Special Donation	64	\$600	\$768	\$768	YES Bags (50 X \$12)
Salvation Army		\$350	\$350	This is approximate- still waiting for final count from Salvation Army	Salvation Army
YWCA Special donation	25 items -sheets, towels, blankets	\$200	\$200	\$200	9 pillows, 2 tw blankets, 1 tw pad, 1 tw comforter, 3 tw sheets, 8 towels, 8 wash and hand towels
SOUPER Bowl Sunday soup donation	100 cans	\$100	\$100	100 cans	Soup donations - goes into Christian Ministry numbers
Wheels for Timmy (carryover from 2009)		\$62	\$62	\$62	TBD
Emergency Christian Ministries Donation (12/10)	14 blankets, 11 bags of canned food	\$0	\$300	Blankets and canned food	To Christian Ministries
Harvey Bible Group	Cash for blankets and groceries	\$0	\$281	\$281 cash	To A Better Way

## March-April Reminder

---

<b>TOTAL</b>		<b>\$19,067</b>	<b>\$21,893</b>		
		<b>Budgeted</b>	<b>Actual</b>		

### MISSIONS UPDATE

#### HEIFER

Riverside brought "Joy to the World" through your donations to Heifer this year. We collected \$2,150, which was enough to purchase 1 heifer, 3 llamas, 5 goats, flocks of chickens, flocks of ducks, and honeybees. Your donations will help provide food for the hungry and a means for families to become self-reliant. Thanks to everyone who donated to Heifer this year.

#### YES KITS FOR OPERATION CLASSROOM

Thanks to Margaret Ann DeBoy, Inga Hill, and Bev Reese who donated their material and time, we have 64 YES Kits for Operation Classroom. As you recall, these YES KIT bags and school materials will be sent to students at Baoma High School, the school we are supporting in Africa.

Now that we have all of these lovely bags, we still need 44 more packs of school items to fill them. What we need for each bag are 4 pens, 1 solar calculator, 1 ruler, and 4 spiral bound notebooks (8 ½ X 11).

If you would like to contribute to fill these bags, we would appreciate it. Put all items in a Ziploc bag or other plastic bag and put in the container in the Narthex.

As always, thanks for your generous giving!

Missions Committee



#### One Great Hour of Sharing

We will receive a special offering on Sunday, April 3rd to support the mission work of UMCOR. When you give to One Great Hour of Sharing, your gifts lay the foundation for all of UMCOR's work. They allow UMCOR to act on your behalf and bring much-needed relief and joy to vulnerable children and adults alike.

UMCOR receives no apportionment or World Service funds of any kind. Gifts to this offering underwrite UMCOR's "costs of doing business." That helps us keep our promise that 100 percent of every other gift you make to a specific UMCOR project can be spent on that project—not on home office costs.

## March-April Reminder

---

Offering gifts over and above those used to cover administrative costs are channeled where they are most needed. UMCOR's specialized ministries—responding in disaster, fighting hunger, alleviating poverty, providing relief supplies around the world, and offering hospitality to immigrants and refugees—all assist the most vulnerable people whose need is greatest.



Message from Dr. Roger, KHUSA Child Psychologist

### Faithfulness

As we pass the mid-point of the school year, it seems timely to talk about the importance of being faithful in your weekly visits. KIDS HOPE USA contracted with a consulting firm to do an objective study of our effectiveness. The evaluator said, “In my studies of mentoring programs, I have found that faithfulness and longevity are widely considered key to outcomes for served youth.” The evaluator went on to report that, “the length of KHUSA matches was substantially longer than those of non-KHUSA matches.”

So why are KHUSA mentors so faithful? I would suggest there are two key reasons. First of all, our mentors are church-based which means they see and encourage each other on a weekly basis. They also hold each other accountable for remaining faithful. Secondly, we have the presence of prayer partners who are able to enlist the support of divine intervention in the relationship of mentor and student. This makes us unique from secular mentoring programs and definitely increases our effectiveness.

Recently the KHUSA Michigan Office hosted an all-day workshop for Michigan KHUSA programs. Three hundred fifty people braved a snowstorm and came from all over the state. We talked together, prayed together, and listened to inspiring speakers. That many people giving up a Saturday to share in the KHUSA journey is certainly proof to me that faithfulness comes in many forms and is the key to the life-changing effects on both mentors and their students. And our final reward comes when we enter heaven and Jesus says, “Well done good and FAITHFUL servant, enter into the JOY of the Lord!” What a blessing.

### Kids Hope Serve Day Camp Fundraisers

## March-April Reminder

---

Thanks to everyone at Riverside and Gethsemane that purchased Super Subs on Super Bowl Sunday. You helped raise \$550.28. This money will be used for food and supplies that will be needed during the upcoming Kids Hope Serve Day Camp that will be here at Riverside the week of June 20<sup>th</sup>. We hope to have up to 40 kids here that week. We will have a potato bar following worship on Sunday, April 3rd.

### **KIDS HOPE SERVE DAY CAMP AND NEEDED VOLUNTEERS**

Kids Hope Serve Camp is June 20-24. There are many opportunities for you to volunteer to help. Following is a brief description of each volunteer position and the number of people we will need for each. Feel free to volunteer for more than one position if the timing fits.

**Drivers:** Drivers will be needed at 3 times each day: between 8:30 and 9:00 am to pick up our campers and deliver them to RUMC, early afternoon to take the campers to the service project site and return them to the church, and again between 3:00 and 3:30 to take the campers home. When you sign up, you do not have to sign up for the entire day, but for one of the three times.

**Drivers' aides:** These aides will be needed to accompany the drivers. We would like to have both men and women to volunteer for this position.

**Teachers:** We are anticipating approximately 40 campers each day. They will be divided into four groups of ten. Lessons will be provided. Teachers will guide the campers through a 30-45 minute study each morning.

**Teachers' aides:** These aides will be needed to help the teachers with the lessons daily.

**Craft leaders:** Craft ideas will be provided daily and the leaders will oversee those projects as the campers work on them.

**Music helpers:** Campers will enjoy music selections each day. We hope to have them all "make a joyful noise." Tony Collins will be leading this group, but may need help.

**Recreation helpers:** Tom Schamp has been charged with finding recreation ideas. Volunteers will be needed to explain to the campers what they will be doing and then lead them in the activity.

**Group leaders:** Each group of 10 campers needs to have a group leader who will get to know them individually and will work with them throughout the day.

**Pray-ers:** We will begin praying on a daily basis on March 7. Pray-ers will be given specific requests each day and will pray for the volunteers, the campers, the serve projects, and the success of the camp.

Meetings will be held to explain specific jobs and to train volunteers.

Watch for more information and sign-up forms in the weekly bulletins. If you have questions, you can ask anyone on the committee: Barry and Judy Turner, Tom Schamp, Tony and Amanda Collins, Nancy Campbell, Jan Phelps, Pastor John and Missi Young...or call/email the church office.

## March-April Reminder

---

The committee is working hard to make this first Kids Hope Serve Camp a success, but it can only be a success if we have volunteers willing to help us each step of the way.

### SCRIPTURE READINGS FOR LENT

**Ash Wednesday – March 9th:**

*Jl 2:12-17; Ps 51:1-17, 2 Cor 5:20b—6:2; Mt 6:1-6, 16-18*

**Thursday:**

*Dt 30:15-20; Lk 9:22-25*

**Friday:**

*Is 58:1-9a; Mt 9:14-15*

**Saturday:**

*Is 58:9-14; Lk 5:27-32*

**First Sunday in Lent-March 13<sup>th</sup>**

*Mt 4:1-11; Mk 1:12-15; Lk 4:1-13*

**Monday:**

*Lv 19:1-2, 11-18; Mt 25:31-46*

**Tuesday:**

*Is 55:10-11; Mt 6:7-15*

**Wednesday:**

*Jon 3:1-10; Lk 11:29-32*

**Thursday:**

*Mt 7:7-12*

**Friday:**

*Ez 18:21-28; Mt 5:20-26*

**Saturday:**

*Dt 26:16-19; Mt 5:43-48*

**Second Sunday in Lent-March 20<sup>th</sup>**

*Mt 17:1-9; Mk 9:2-10; Lk 9:28-36*

**Monday:**

*Dn 9:4-10; Lk 6:36-38*

**Tuesday:**

*Is 1:10, 16-20; Mt 23:1-12*

**Wednesday:**

*Jer 18:18-20; Mt 20:17-28*

**Thursday:**

*Jer 17:5-10; Lk 16:19-31*

**Friday:**

*Gn 37:3-4, 12-13, 17-28; Mt 21:33-43, 45-46*

**Saturday:**

*Mi 7:14-15, 18-20; Lk 15:1-3, 11-32*

**Third Sunday in Lent-March 27<sup>th</sup>**

*Jn 4:4-52; Jn 2:13-25; Lk 13:1-9*

**Monday:**

*2 Kgs 5:1-15a; Lk 4:24-30*

**Tuesday:**

*Dn 3:25, 34-43; Mt 18:21-35*

**Wednesday:**

*Dt 4:1, 5-9; Mt 5:17-19*

**Thursday:**

*Jer 7:23-28; Lk 11:14-23*

**Friday:**

*Hos 14:2-10; Mk 12:28b-34*

**Saturday:**

*Hos 6:1-6; Lk 18:9-14*

## March-April Reminder

---

## March-April Reminder

---

### **Fourth Sunday in Lent-April 3<sup>rd</sup>**

*Jn 9:1-41; Jn 3:14-21; Lk 15:1-3, 11-32*

#### **Monday:**

*Is 65:17-21; Jn 4:43-54*

#### **Tuesday:**

*Ez 47:1-9, 12; Jn 5:1-3, 5-16*

#### **Wednesday:**

*Is 49:8-15; Jn 5:17-30*

#### **Thursday:**

*Ex 32:7-14; Jn 5:31-47*

#### **Friday:**

*Wis 2:1, 12-22; Jn 7:1-2, 10, 25-30*

#### **Saturday:**

*Jer 11:18-20; Jn 7:40-53*

### **Fifth Sunday in Lent-April 10<sup>th</sup>**

*Jn 11:1-45; 12:20-33; 8:1-11*

#### **Monday:**

*Dn 13:1-9, 15-17, 19-30, 33-62; Jn 8:1-11*

#### **Tuesday:**

*Nm 21:4-9; Jn 8:21-30*

#### **Wednesday:**

*Dn 3:14-20, 91-92, 95; Jn 8:31-42*

#### **Thursday:**

*Gn 17:3-9; Jn 8:51-59*

#### **Friday:**

*Jer 20:10-13; Jn 10:31-42*

#### **Saturday:**

*Ez 37:21-28; Jn 11:45-57*

### **Palm Sunday-April 17<sup>th</sup>**

*Mt 26:14—27:66; Mk 14:1—15:47; Lk 22:14—23:56*

#### **Monday:**

*Is 42:1-7; Jn 12:1-11*

#### **Tuesday:**

*Is 49:1-6; Jn 13:21-33, 36-38*

#### **Wednesday:**

*Is 50:4-9; Mt 26:14-25*

#### **Holy Thursday:**

*Ex 12:1-8, 11-14; 1 Cor 11:23-26; Jn 13:1-15*

#### **Good Friday:**

*Is 52:13—53:12; Heb 4:14-16; 5:7-9; Jn 18:1—19:42*

#### **Easter Vigil:**

*Mt 28:1-10; Mk 16:1-7; Lk 24:1-12*